



# Resource Guide for **SLPs, OTs, & PTs**

**2022**



# Take a peek at our toolkits.

This guide is here to assist you on your journey. Our team of SLPs and OTs have put together toolkits to help you find new ways to use assessments together and discover resources designed to help you succeed.

## **New for 2022..... 4**

BBCS-4:R  
BSRA-4  
CELF® Preschool-3  
CELF Preschool-3 Screening Test  
Everyday Memory Survey  
Q-global® Video Proctoring

## **Beyond the Screen ..... 5**

### **Autism Spectrum Disorders Tools .... 6**

Adolescent/Adult Sensory Profile  
ASRS®  
CARS2  
CCC-2  
CELF-5  
GARS-3  
PEDI-CAT  
PLS™-5  
PPVT™-5/EVT™-3  
Sensory Profile™ 2  
Vineland™-3

### **Digital Platforms ..... 7**

Q-global  
Q-interactive®

### **Early Childhood Tools ..... 8-9**

Bayley™-4  
Bayley-4 Screening Test  
BBCS-4:R  
Boehm™-3  
Bridge of Vocabulary 2  
BSRA-4  
CCC-2  
CELF Preschool-3  
CELF Preschool-3 Screening Test

PDMS-2  
PEDI-CAT  
PLS-5  
PLS-5 Screening Test  
PPVT-5/EVT-3  
Sensory Profile 2  
Short Sensory Profile 2

## **K-12 School Tools..... 10-11**

ASA™  
Beery™ VMI  
Boehm-3  
BOT™-2  
BOT-2 Brief  
Bridge of Vocabulary 2  
CELF-5  
CELF Preschool-3  
CELF Preschool-3 Screening Test  
DASH/DASH 17+  
GFTA™-3/KLPATM-3  
GFTA-3 Spanish  
M-FUN  
PEDI-CAT  
PLS-5  
PLS-5 Screening Test  
PPVT-5/EVT-3  
Review360® for SLPs  
SCAN-3:C  
Sensory Profile 2  
Sensory Profile 2 Short Form

## **OT Digital Resources..... 12**

Bayley-4  
BMAT  
BOT-2



Everyday Memory Survey  
PEDI-CAT  
Sensory Profile 2

### **Tweens and Teens Tools..... 13**

Adolescent/Adult Sensory Profile  
Beery VMI  
BOT-2  
Bridge of Vocabulary 2  
CELF-5  
CELF-5 Metalinguistics  
GFTA-3/KLPA-3  
PEDI-CAT  
PPVT-5/EVT-3  
Sensory Profile 2  
TFLS

### **Dyslexia Tools..... 14-15**

Beery-VMI Teaching Materials  
Bridge of Vocabulary 2  
CELF-5  
Intervention Guide for LD Subtypes  
KTEA™-3 Brief Form  
Review360 for SLPs  
Shaywitz DyslexiaScreen™

SPELL-Links™  
WIAT™-4  
WRMT™-III

### **Adult Tools..... 16-17**

Adolescent/Adult Sensory Profile  
AM-PAC  
BCSE  
BMAT™  
BMAT Short Form  
CLQT+  
D-KEFS™  
Everyday Memory Survey  
Raven's®-2  
RBANS® Update  
TFLS  
Vineland™-3  
WAB™-R

### **Ordering..... 18**



There's plenty more to explore!

Visit **PearsonAssessments.com** to see our full library.

**Need products with  
a Spanish option?**



Boehm-3 » CLQT+ » GFTA-3  
Intervention Guide for LD Subtypes  
PEDI-CAT » PLS-5 » PLS-5 Screening Test  
Sensory Profile 2 » Vineland-3

# What's new and upcoming for you!

## Meet **Shannon** SLP & Principal Research Director

I immigrated from Taiwan at age 5 and started kindergarten in the U.S. As a multilingual learner, the first few months were overwhelming. Despite my frustration, I learned that language is power. It allows needs to be met, friendships to be built, and knowledge to be gained. I'm proud to have participated in the development of the CELF family of products, including CELF Preschool-3. While not designed for multilingual learners, these products may help kids with language impairments receive needed services, so that they, too, can know language is power.



### Now Available!

Assess aspects of language necessary for preschool children to be successful in the classroom with the **CELF Preschool-3 Test**. Plus, the **CELF Preschool-3 Screening Test** is also available!



### New!

Quickly screen adults for memory related behaviors in daily life using the **Everyday Memory Survey** to determine if further testing or a referral is needed.



Easily assign one of 40+ assessments and proctor "in person" via video with **Q-global Video Proctoring**. Once the assessment is complete, remain online with your client to consult or review results.



### Coming November 2022!

Evaluate a child's acquisition of basic concepts in a quick, valid, and reliable way with the **Bracken Basic Concept Scale, Fourth Edition: Receptive**.



Brief and easy to administer, the **Bracken School Readiness Assessment, Third Edition** helps determine if a child is ready for school.





# Digital. Simplified.

## Introducing “Beyond the Screen”

The world is changing, but so are we. Let us meet you where you are and bring the focus back to you, the person *beyond the screen*. Join us as we work to fulfill our commitment to simplifying the lives of educators through digital innovations.



Visit [PearsonAssessments.com/BeyondtheScreen](https://PearsonAssessments.com/BeyondtheScreen)

# Tools for Autism Spectrum Disorders

## Meet **Patricia**

### SLP & Research Director

Creating new tools that allow clinicians to accurately diagnose disorders and plan appropriate interventions is what motivates me to come to work every day. While I no longer work with clients and families directly, I hope that I am able to make a difference by developing reliable and valid assessments so that clinicians can continue to change the world one person — one family — at a time.



## Tools to support social communication needs

Tests like **Sensory Profile 2** identify how sensory processing may be interfering with a child's participation in different settings, giving many caregivers that "Aha" moment.

**PEDI-CAT** helps caregivers assign a difficulty rating on aspects of everyday life, as well as rate how much support the caregiver provides to a child with social communication needs. It includes a module validated for children and adolescents with Autism Spectrum Disorders (ASD) which incorporates new and adapted items, and scaling adjustments according to the unique characteristics of children with autism.



### Autism Spectrum Disorders Support Tools

- » Adolescent/Adult Sensory Profile
- » ASRS » CARS2 » CCC-2
- » CELF-5 » GARS 3 » PEDI-CAT
- » PLS-5 » PPVT-5/EVT-3
- » Sensory Profile 2
- » Vineland-3

See our Autism tools at **PearsonAssessments.com**

# Q-interactive? Q-global? Both?



## Meet **Kristen**

### SLP & Product Owner – Q Platforms

Previously, I worked as an SLP in multiple school districts where I experienced many of the issues that plague our customers. I struggled with large caseloads, parents and students skeptical of the testing process, and not enough time in my day. Now, I work with our software team to ensure our tests are more engaging, efficient, and informative. My goal is to create the best possible digital testing experience for both you and your students.

## As an SLP or OT, see which system is right for you!



Q-interactive®



Q-global®



**I want to administer and score individual assessments (PPVT-5) using two tablets.**

**Q-interactive** allows you to administer 1--1 tests using two iPad® devices. All of your data is backed up to a website, where you can generate score reports and view digital records of your raw data.



**I want to administer a test in paper (CELF-5, BOT-2) then digitally score and report.**

**Q-global** provides an online platform for real-time scoring and reporting of paper kits.



**I want to administer and score rating scales, questionnaires, or inventories (Bayley-4, PEDI-CAT, Sensory Profile-2) online.**

**Q-global's** remote on-screen administration allows the assessment to be administered via any web-enabled device. A respondent can access the assessment from their own web-enabled device through a secure URL delivered via email. Tests administered via paper can be scored using Q-global.

Learn more at **[PearsonAssessments.com/Digital](https://www.pearsonassessments.com/digital)**

## Meet **Shelley**

### OT & Product Management Director

Pearson's early intervention tools have been a big part of my personal life. As the mother of a daughter with complex needs and an OTR, the Bayley-III was one of the first assessments used to help her qualify for the necessary services at an early age. It didn't feel like an assessment, but more like quality play time with my child and a clinician. It made for a positive experience at a challenging time.



## Take a deeper dive into our world of early intervention tools!

Pearson's early childhood tools help so many families on this journey. A typical example of an assessment flow similar to my own experience might include:



1. A screening assessment using the **Bayley-4 Screening Test**, **CELF Preschool-3**, or the **Sensory Profile 2 Short Form**



2. A remote questionnaire sent to the caregiver to be completed prior to an appointment (for example the **Sensory Profile 2** and the **PEDI-CAT**)



3. An in-person assessment using a full **Bayley-4**, providing a chance for the clinician and caregiver to explore "together" what the child can do
4. An in-person assessment exploring language development using the **PLS-5** and/or the **PPVT-5** and **EVT-3**



5. Intervention sessions based on information provided during the assessments
6. Progress monitoring using measures built right into many of our tools

The information gathered in steps 1–6 can help determine school placement and ensure the right services are in place from the start. In my situation, the continuity of many of these tools through the school years has helped reduce unnecessary assessments and streamlined developmental and educational monitoring.



# Early Childhood Toolkit

## Screen

Bayley-4  
Screening Test  
CELF Preschool-3  
Screening Test  
PLS-5  
Screening Test  
CCC-2  
PEDI-CAT  
Sensory Profile 2  
Short Form  
BSRA-4

## Assess

Bayley-4  
CELF Preschool-3  
PLS-5  
PLS-5 Spanish  
PPVT-5/EVT-3  
PEDI-CAT  
Sensory Profile 2  
PDMS-2  
BOEHM-3  
BBCS-4:R

## Intervene

Sensory Profile 2  
Bridge of  
Vocabulary 2

## Monitor

PEDI-CAT  
Bayley-4  
PPVT-5/EVT-3

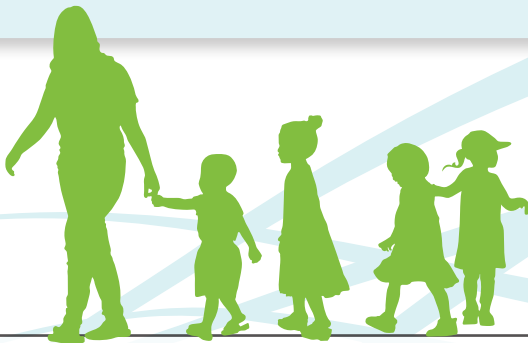
**Coming next winter!**

**Bracken 4**  
Basic Concept Scale: **RECEPTIVE**

**Fresh and featured!**



**CELF PRESCHOOL 3**  
Clinical Evaluation of Language Fundamentals—PRESCHOOL



**Your days are long and difficult but taking a “brain break” and being intentional with your self-care and routines can help you get through each one easier!**

- Recognize where you hold your tension (jaw, neck, shoulders) and make a conscious effort to keep them relaxed.
- Find a guided meditation that you enjoy. (We enjoy the “Rainbow Script”.)
- Keep a journal.
- Make a list of the day’s triumphs.
- Before you go to bed, make a list of what you need to do tomorrow.
- Create a bedtime ritual and have a 15-minute wind-down routine.

Learn more at [PearsonAssessments.com/EarlyChildhood](https://www.pearsonassessments.com/EarlyChildhood)

## Meet **Nancy**

SLP & Sr. Product Manager

## Meet **Melinda**

OT & Sr. Product Manager

Thinking about the students and families we worked with keeps us motivated. We work to design assessments that help clinicians look beyond the dreaded “standardized test” scores and use their assessment results to plan therapy goals that address family and teacher concerns in ways that have immediate impact on students’ everyday lives.



## Tools for every age and stage!



**SLPs**, screen with **CELF Preschool-3 Screening Test**, **PLS-5 Screening Tests** (English or **Spanish**) or **CELF-5 Screening**. For older students, try **PPVT-5/EVT-3** for vocabulary skills. Follow up with **PLS-5** and **CELF Preschool-3** for in-depth assessment of your preK kids, and **CELF-5** for the K-12 crowd. To evaluate articulation and phonological processes, rely on **GFTA-3**, **KLPA-3**, or **GFTA-3 Spanish**!

**OTs**, we offer tools for sensory, motor, and beyond! Examine motor function and participation with **M-FUN**. Serving the K-12 group? Use **BOT-2** to measure gross and fine motor skills. **Beery VMI** is the go-to tool to examine integration of their visual and motor abilities.

For students on the autism spectrum, and those with multiple disabilities or sensory needs, use **Sensory Profile 2** to understand their sensory preferences and plan strategies to support participation. Use **PEDI-CAT** to examine daily living, mobility, social/cognitive, and responsibility.

*Need help making choices based on the unique needs of your students? Reach out to us and we will happily guide you to the right solution!*

# School Toolkit for SLPs & OTs

## Screen

**PEDI-CAT**  
**CELF Preschool-3**  
**Screening Test**  
**ASA**  
**BOT-2 Brief**  
**Sensory Profile 2**  
**Short Form**

## Assess

**PPVT-5/EVT-3**  
**CELF-5**  
**CELF Preschool-3**  
**GFTA-3/KLPA-3**  
**GFTA-3 Spanish**  
**M-FUN**  
**BOT-2**  
**SCAN-3:C**  
**Beery VMI**  
**DASH/DASH 17+**  
**Boehm-3**

## Intervene

**Sensory Profile 2**  
**Bridge of**  
**Vocabulary 2**  
**Beery VMI**

## Monitor

**PEDI-CAT**  
**PPVT-5/EVT-3**  
**Bridge of**  
**Vocabulary 2**  
**Review360**  
**for SLPs**

Now Available

**CELF<sup>®</sup>**  
**PRESCHOOL-3**  
Clinical Evaluation of Language Fundamentals-PRESCHOOL

**PEDI-CAT**  
Pediatric Evaluation of Disability Inventory Computer Adaptive Test

**ppvt5**  
Peabody Picture Vocabulary Test, Fifth Edition

Explore more at **PearsonAssessments.com**



# Get digital resources at your fingertips.

## Meet **Susan** OT & Research Director

I knew I wanted to become an occupational therapist by the time I was a senior in high school. My passion to engage with people of differing abilities was clear to all who knew me. While working as an OT, I enjoyed the opportunities to interact with individuals across the entire lifespan and the families who loved them. I feel fortunate to have had 20+ years as a practitioner before joining Pearson!



## Look no further! Q-global may be just what you need!



As an OT, you're on the move from one client to the next while trying to squeeze in your admin (and possibly a minute to eat). I wish I had **Q-global** sooner.

Its web-based system for test administration, scoring, and reporting could have saved me countless hours. Now that I have Q-global, I LOVE using it.

### Benefits of Q-global include:

- Immediate report generation
- On-the-fly assessment selection
- Reduced caregiver financial and time burdens

## Q-global Tools for OTs

- » Bayley-4
- » PEDI-CAT
- » Sensory Profile 2
- » BOT-2 » BMAT
- » Everyday Memory Survey

Get acquainted at **[PearsonAssessments.com/Qglobal](https://PearsonAssessments.com/Qglobal)**

# Tools for the in-between phase.



## Meet **Jan** SLP & Director of Project Management

When I was a practicing SLP, assessments were crucial to my ability to plan and implement effective treatments for my students and clients. The work I do now enables Pearson to continue providing high-quality assessments for SLPs and OTs to use, and I'm energized by the people I work with in test development and by the customer response to our assessments.

## The in-between phase: not a child, but not quite an adult.

Of all the age groups, tweens and teens can be the most challenging. It is a pivotal time for developing life skills and problem-solving skills, and an opportunity for us to support them.

- What skills do they need to get through school?
- What skills and strategies can I equip them, their families, and school with to help navigate the future years?

The answers to these and many of your other questions can be found here.

### **Tweens & Teens Tools for SLPs & OTs**

» TFLS

» Bridge of Vocabulary 2

» PPVT-5/EVT-3 » GFTA-3/KLPA-3

» CELF-5 » CELF-5 Metalinguistics

» PEDI-CAT » Sensory Profile 2

» Adolescent/Adult Sensory  
Profile

» BOT-2 » Beery VMI

Learn more at **PearsonAssessments.com**

# How do you know if your students are at risk for dyslexia?

**Let's collaborate across disciplines  
and make measurable change!**

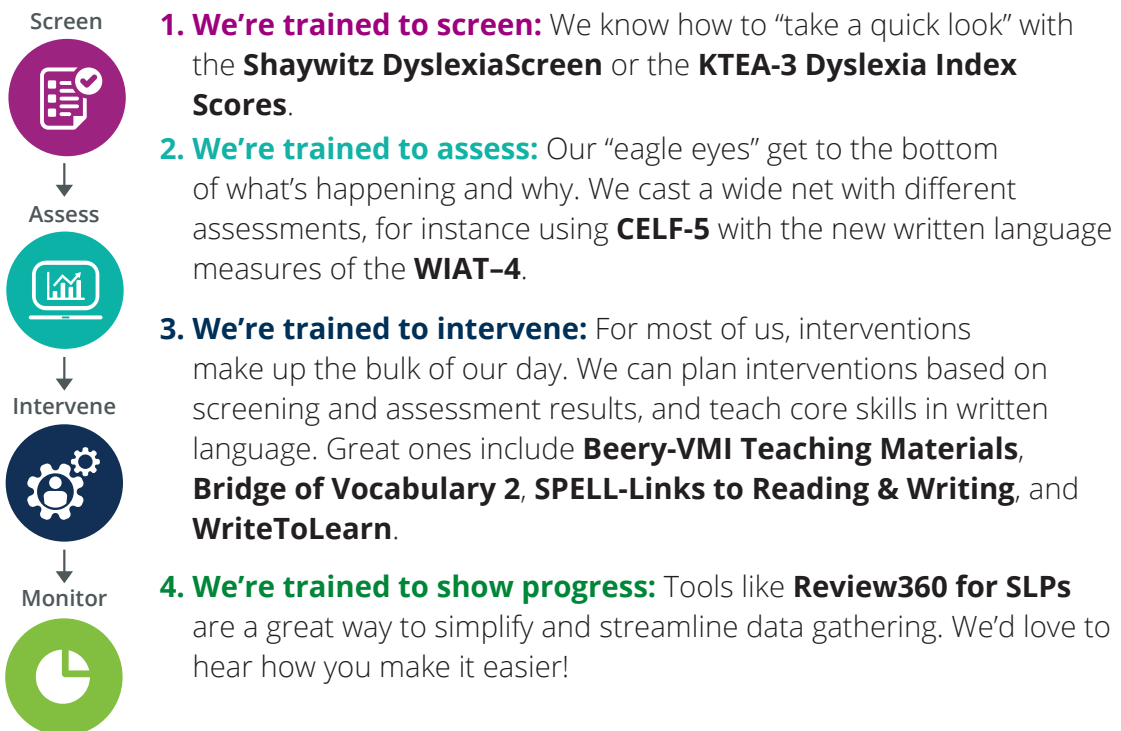
## Meet **Tina**

### SLP & Sr. Product Manager

My clinical career as a SLP started in acute care neuro and trauma, then I had four kids (one with epilepsy) and earned a front-row seat watching their brains tackle oral and written language. This mash-up of my two worlds, the groundswell of awareness in dyslexia, and finding examples of exceptional team-based success around the country get me out of bed every morning.



When identifying dyslexia and other written language disorders, education professionals have so much to offer the team.



# Dyslexia Toolkit

## Screen

WRAT5  
KTEA-3 Brief Form  
Dyslexia Index  
scores from  
the KTEA-3 and  
WIAT-4  
aimswebPlus  
Shaywitz  
DyslexiaScreen

## Assess

KTEA-3  
Comprehensive  
Form  
WIAT-4  
WRMT-III  
DRA3  
EDL2+  
PAL-II

## Intervene

SPELL-Links to  
Reading & Writing,  
Intervention Guide  
for LD (Learning  
Disability)  
Subtypes\*  
DRA3  
EDL2+  
WriteToLearn

*\*Included in Q-global  
as part of a CELF-5,  
KTEA-3, or WIAT-4  
subscription*

## Monitor

aimswebPlus  
Review360 for SLPs  
DRA3  
EDL2+  
WriteToLearn



Now available!

 **WIAT® 4**

**Word jumbles:** Untangle the letters to discover each word.

DINOUCET  
NIGNAELR  
SASSMESNTE  
ETTS  
NRDGIEA

NTWGIRI  
NINTILGSE  
CHOSOL  
TIAGILD

Answers: education, learning, assessments, test,  
reading, writing, listening, school, digital

Learn more at [PearsonAssessments.com/Dyslexia](https://www.pearsonassessments.com/dyslexia)

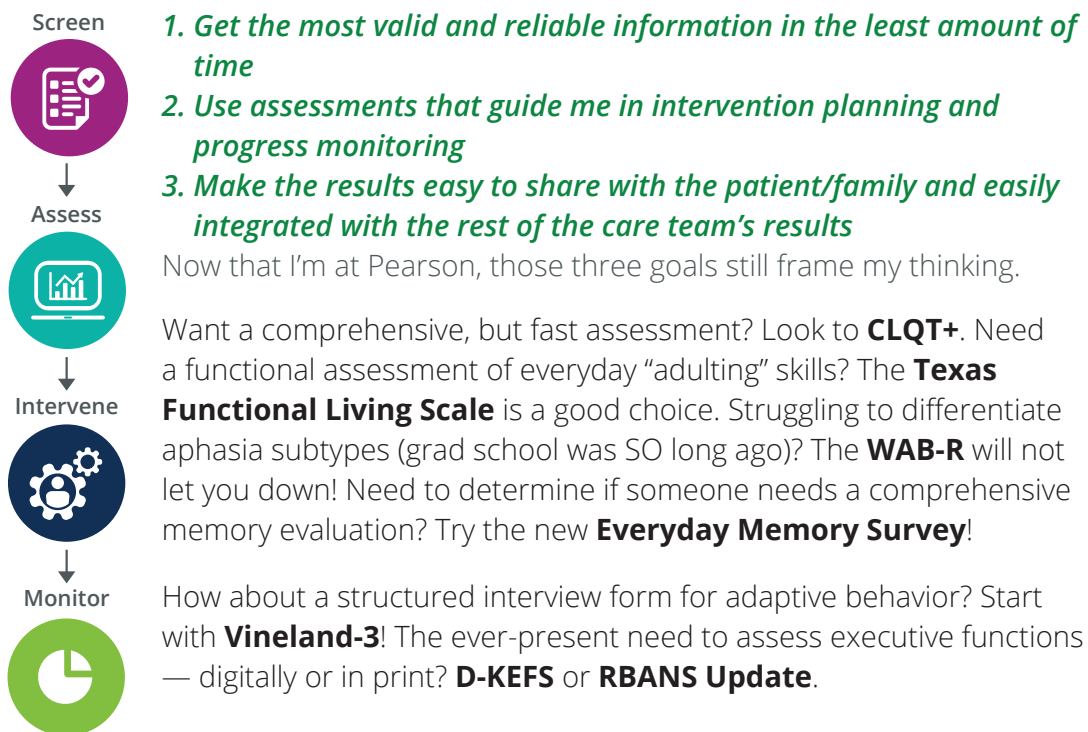
## Meet **Jessi** SLP & Assessment Representative

Working with the adult population has given me a backstage pass to witnessing our assessments guiding effective, evidence-based treatment and intervention for various diagnoses. Hearing someone say “I love you” for the first time since their stroke, or seeing someone problem-solve everyday issues in order to earn their discharge home brings me such joy.



## We’ve got a vast toolkit of invaluable solutions!

When I worked in a clinical setting, full of reimbursement issues and organizational constraints, I had three goals:



Tool choice is everything, and what I like about what we have within Pearson is the breadth and depth of the ones I truly need.

Explore more at **PearsonAssessments.com**



# Adult Toolkit for SLPs & OTs

## Screen

Everyday Memory  
Survey  
BCSE  
AM-PAC  
BMAT Short Form

## Assess

WAB-R  
CLQT+  
TFLS  
RBANS Update  
D-KEFS  
Vineland-3  
BMAT  
Raven's 2  
Adolescent/Adult  
Sensory Profile

## Intervene

Adolescent/Adult  
Sensory Profile

## Monitor

AM-PAC  
RBANS Update  
Vineland-3  
BMAT

**NEW!**



"Don't let the world change your smile,  
let your smile change the world."

Learn more at [PearsonAssessments.com](https://www.pearsonassessments.com)

# Easy ways to order

## How to order



### Web

The *quickest way to order* is via our website at **PearsonAssessments.com**



### Phone

**+1 (800) 627-7271**



### Fax

Prior to faxing, review the fax order checklist at: **PearsonAssessments.com/Fax**  
**+1 (800) 232-1223**



### Purchase orders

Customers purchasing on behalf of an organization with an established account may utilize purchase orders in the website checkout as well as by web form or fax. Learn more: **PearsonAssessments.com/PO**



### Quotes

Create your own quote on our website. Visit **PearsonAssessments.com/Quote** to get started.



### Questions about ordering?

We've got you covered. Visit **PearsonAssessments.com/Ordering** for helpful hints on:  
Account creation • Qualifications • Manual ordering • Purchase orders • Mail-in scoring



## Order Status

Check the status of your order at **PearsonAssessments.com/Orderstatus**

## Invoices

Find an invoice at **PearsonAssessments.com/Invoice**

## Additional support

Just as there are many ways to order, there are different support options available at: **PearsonAssessments.com/Contact**

- Read online help articles
- Submit an inquiry to Customer Support
- Call Customer Support:  
**+1 (800) 627-7271**



## Product platform login

For customers who have purchased Pearson products that have an online platform for assessment administration/scoring, you can find links to all platform login pages at **PearsonAssessments.com/Product-logins**

## Things to remember!

Jot down your **customer account number** for future reference while ordering. You can find this listed on past order confirmations or invoices

Save your **Q-global Inventory Account Number** for ordering. Log into Q-global, then access My Account > Account Information:



# We're here through every step of your journey.

Use this 2022 guide to identify the tools you need to continue to improve lives.

Keep in touch with us on our social channels:



/PearsonAssessmentsUS



@PearsonAssessmentsUS



@PearsonAssessUS



Pearsonassessmentsus



Pearson-Assessments-US



Learn more at **PearsonAssessments.com**



"iPad is a registered trademark of Apple Inc. registered in the U.S. and other countries. "ASRS" and "Autism Spectrum Rating Scales" are trademarks of Multi-Health Systems Inc. "Beery" is a trademark of Keith E. Beery and Natasha A. Beery. "PPVT" is a trademark of Wascana Limited Partnership. "SPELL-Links to Reading & Writing" and "Class Links for Classroom" are trademarks of Learning By Design, Inc.

© 2022 All Rights reserved. CLINA2567 ML 6/22

